

Quad tool head, featuring x2 tangential tools for exceptional cutting & creasing

Cut and crease card, paper, sheet labels, polymers
N/E/F fluted, corrugated, mount boards, FBB, and more!



colorcut FB1180-T

High force/superfast B1 cutter/creaser

T-SERIES - Cut Thicker/Cut Faster!™

Large format | enhanced capabilities | more media types

Cut and crease absolutely any shape!

colorcut FB1180^T

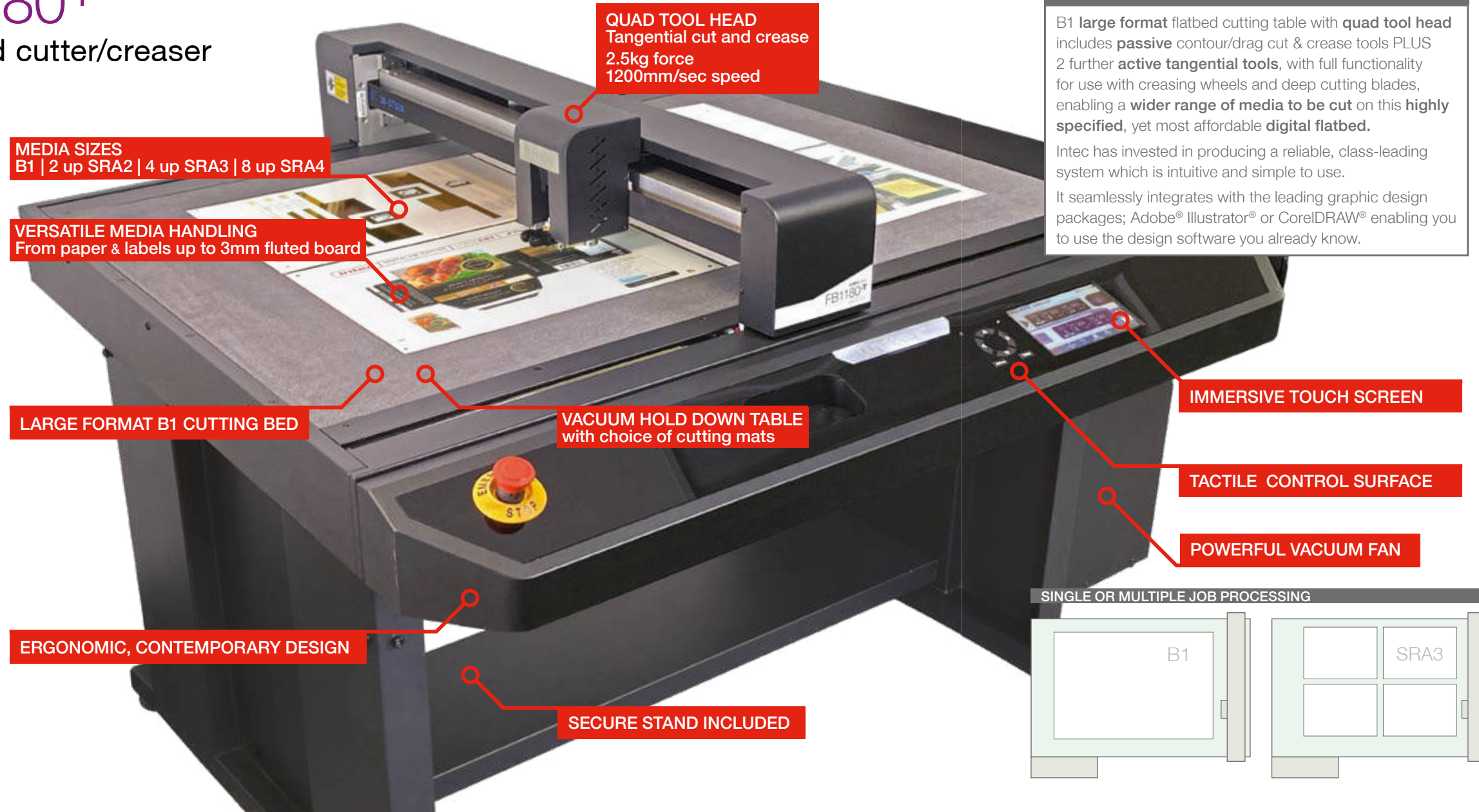
B1 tangential digital-die flatbed cutter/creaser

Superfast B1 flatbed cutter including 4 tools, both contour cutting tools and active tangential tools. The FB1180^T is precise enough to cut labels yet its amazing 4 tool selection provides users with the option to switch to high force cut and crease for thick N/E/F flute media, and a diverse range of media in-between.

Perfect for on demand prototype pieces to light production runs of two and three dimensional items, the FB1180^T flatbed cutting table can cut and crease virtually any form of print, from sample packaging, to high-end products, protective cartons or synthetic point-of-sale items and kiss-cut adhesive labels.

The FB1180^T with combined market-leading ColorCut Pro software, brings many advanced features to aid design and production.

ColorCut T-Series a new industry standard. Designed in the UK, beautifully engineered, totally accurate and highly affordable.

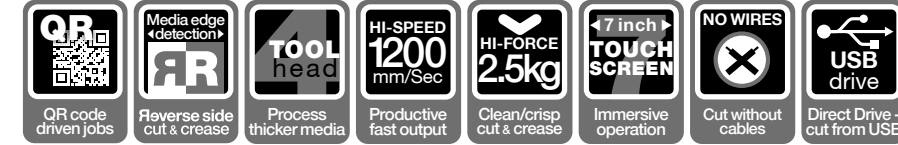


PRODUCT OVERVIEW

B1 **large format** flatbed cutting table with **quad tool head** includes **passive** contour/drag cut & crease tools PLUS 2 further **active tangential tools**, with full functionality for use with creasing wheels and deep cutting blades, enabling a **wider range of media to be cut** on this **highly specified**, yet most affordable **digital flatbed**.

Intec has invested in producing a reliable, class-leading system which is intuitive and simple to use.

It seamlessly integrates with the leading graphic design packages; Adobe® Illustrator® or CorelDRAW® enabling you to use the design software you already know.



PRIMARY FEATURES

Quad tool head - includes Passive Drag and Active Tangential tools for a truly versatile media capability.

Highly productive - high speed and high pressure cut and crease, for prototyping of singles or multi-sheet 2/4/8 up rapid production for more jobs.

QR driven jobs - instantly & automatically finds cut files.

Standalone production - the 'NO WIRES' file system. Load jobs from a USB drive, view and display jobs on the large touch screen, select them by name, or simply auto-select the correct cut file and cut the job by pressing the SCAN button. One million job capacity.

Page edge detection - automatically enables processing of job from the reverse side for more cutting and creasing options depending on media selection.

Vacuum hold down - Includes a powerful 1100W vacuum system with acoustic muffler that keeps cut pieces firmly in place, for fast and accurate processing, yet provides a quiet & comfortable operating environment.

WHAT IS TANGENTIAL?

A **tangential** knife is an active knife where the direction of the blade is controlled by a motor. Tangential technology enables the FB1180^T to lift the tool up from the media, rotate it and lower it back into the media. Suitable for creasing wheels or to enable deeper, precise cuts for thicker (often fluted) stock.

In contrast, a **passive** contour tool remains in the media during cutting or creasing, dragging the tool which will passively rotate (faster, but suited to labels or thinner card).

MEDIA COMPATIBILITY

Paper/rice paper
Sheet labels
Polymers
FBB and sheet card
Corrugated and mount boards
N/E/F fluted boards
and more!

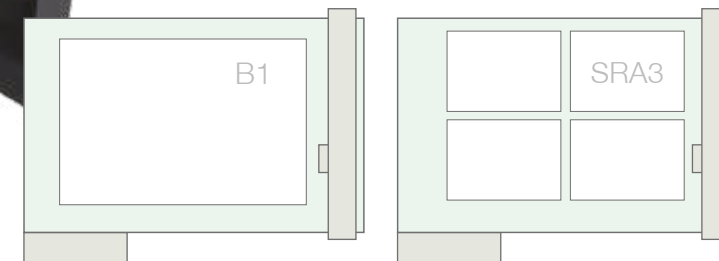
Quad tool head - includes two passive contour tools for fast cutting, and two active tangential tools enabling production on thick media

High speed up to 1200mm/sec, with high force cut and crease up to 2,500gf

Powerful vacuum fan with silencer - for full, no-slip media hold down of jobs

QR code driven standalone operation - run jobs from USB drive

SINGLE OR MULTIPLE JOB PROCESSING





Tools & accessories

QUAD TOOL HEAD

Quad tool head includes passive contour/drag cut & crease, with active tangential tool functionality using alternate tool positions; suitable for use with creasing wheels and extended depth cutting blades. This combination of tools provides a much wider media handling capability.

CUTTING TOOLS AND BLADES

- Active Tangential cutting tool with deep knife 45° blades
x 3 Tangential blades included
- Passive contour/drag knife cutting tool
Drag blade set - included with standard and circlip blades in 30°/45° and 60° angles

CREASING TOOLS

- Active Tangential creasing wheel with 2 different interchangeable wheels included for different media types
- Passive Ball creasing tools
2 tools; one large or one small for different media or crease width

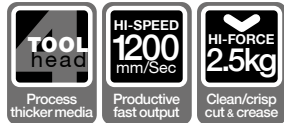
CALIBRATION TOOL

A pen calibration tool is provided for initial tool head set-up.



Pen calibration tool

High force, rapid tool head
Four tools including x 2 tangential tools



Tangential tools fitting kit



Active tangential cutting tool with x 3 replacement blades



Passive contour/drag cutting tool (blade holder)



Active tangential wheel creasing tool and interchangeable wheel



Passive ball crease tools (rapid wide and narrow crease)

Tangential blades

45° 5mm - for heavier/thicker stocks up to 3mm

Swivel/drag blades:

Yellow 30° 1mm ø - for film, very soft material, thin label material

Red 45° 1mm ø - typically for labels, stickers, and thin paper.

Blue 60° 1mm ø - for hard media. The sharply angled tip provides a sharper point edge. Suitable for penetrating dense synthetic vinyl types

Circlip blades:

Red 45° 1.4mm ø - Most packing board up to 750 micron. Circlip provides better pressure and improves blade direction changes on dense media, from 0.25 to 0.75 mm thick

Blue 60° 1.4mm ø - For dense, rigid or thick media. Sharply angled tip provides a sharp point ideal for polyester, PVC or magnetic materials. 0.25 to 1.2mm



Blade legend:

1. 45° tangential blade 2. 30° blade 3. 45° blade
4. 60° blade 5. 45° circlip knife 6. 60° circlip knife

Quad tool cut and crease includes tangential capability

Standalone - NO WIRE job processing from a USB drive!

QR job coding delivers automation functionality

Immersive 7" touch screen control panel

Powerful, yet easy to use ColorCut Pro software included

FLATBED CUTTING TABLE

Sheets are held securely in place by the powerful 1100W vacuum system included with the FB1180^T. A range of two cutting mats (included) complements the vacuum table, with the vacuum passing through the mats to the precision milled aluminium platen of the vacuum table, which ensure the sheets are flat and secure during cutting.

VACUUM HOLD DOWN - FAN AND SILENCER

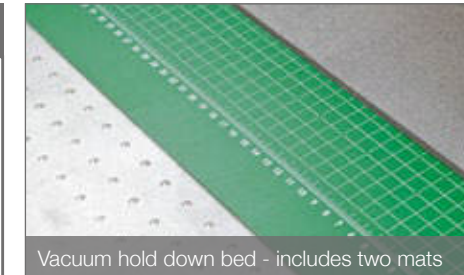
The powerful centrifugal air pump, creates the vacuum required for the hold down function. The fan is acoustically shielded by its housing and the system even includes a silencer, ensuring the vacuum system is un-obtrusive and enabling the FB1180^T to be used in a normal office environment.

CUTTING MATS

- Green self-healing mat for kiss-cutting
- Superior grey felt mat for cut-through and crease

ACCESSORIES

- Tools and accessories box includes:
- Tangential tool fitting kit and x 2 allen keys



Vacuum hold down bed - includes two mats



Acoustically housed, high pressure vacuum fan



Acoustic silencer included with fan

ColorCut Pro Software



Cutting | Creasing | Scoring | Perforating | Kiss-cutting

Cut, crease, perforate and score card & labels
100% digital - no dies required



SOFTWARE

ColorCut Pro explained

ColorCut Pro consists of two parts, the first is the ColorCut Pro Client, a plug-in to Illustrator for Mac or PC creatives or to CorelDRAW (PC only). This enables designers/artworkers to generate cut files without the need to learn any new applications. The ColorCut plug-in also adds the ability directly into your graphics application to add both cut registration marks and QR codes with associated job numbers, easily, simply and as an integral part of the design process. It also saves each cut job into a ColorCut Pro job library for instant retrieval at any time, now or in the future.

Adding the QR codes and job numbers, is a key part of the ColorCut Pro magic, with QR codes the FB1180-T is able to retrieve previously prepared cut files without the need to launch **Adobe® Illustrator®** or **CorelDRAW®**. Infact this means, that after a graphic designer has sent the job to print in a production print environment, any user can collect the sheets from the printer and cut them without needing to trouble the graphic designer to ask what cut file to use, or where it is stored.

CUT BY COLOUR

Colour recognition

ColorCut Pro makes cutting jobs simple. It is easy to set-up cutting, perforating, scoring, kiss-cutting and creasing processes by using different colours in the design.

ColorCut recognises different colours in the cut file allowing users to assign different operations, or the order in which they are performed. Another key advantage is colour assignment can be changed (if your customers use different colours).

AUTO SCAN QR CODE AND REGISTRATION MARKS

Cut file acquisition and job placement

The in-built camera on the FB1180-T reads the **QR code** on each printed sheet and **automatically** retrieves the associated cutting file from the **ColorCut Pro Job Library**.

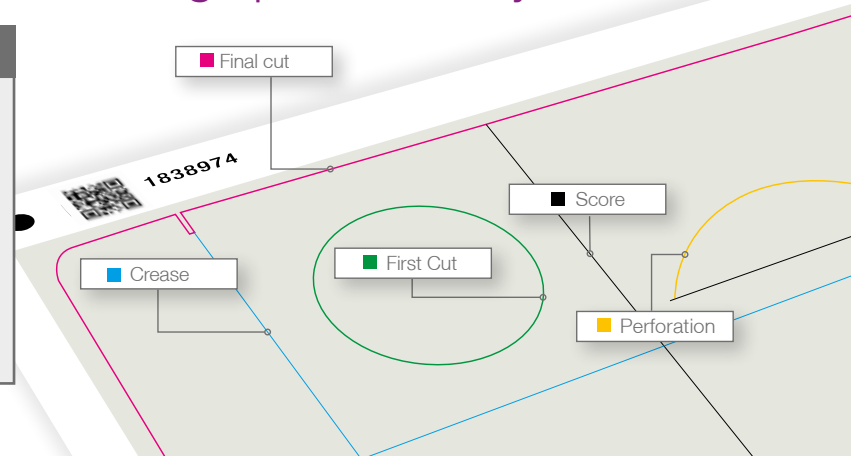
Additionally the camera reads the registration SmartMarks placed in each corner of the sheet, for positional accuracy. Advanced features compensate for print skew or positioning skew to ensure precise cut registration.

QR DRIVEN WORKFLOW

Process single/multiple or mixed jobs in the same run

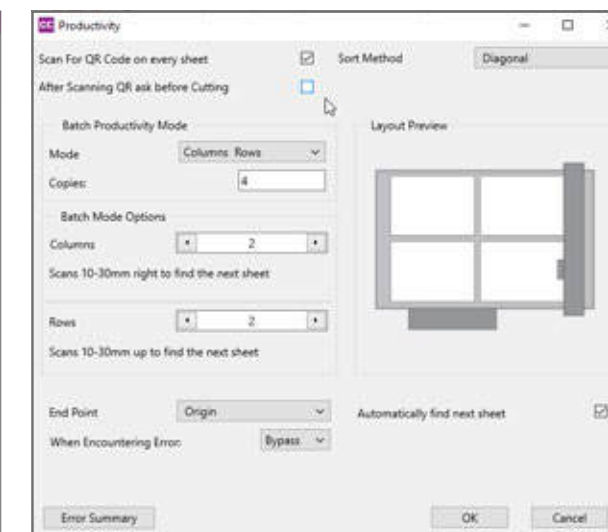
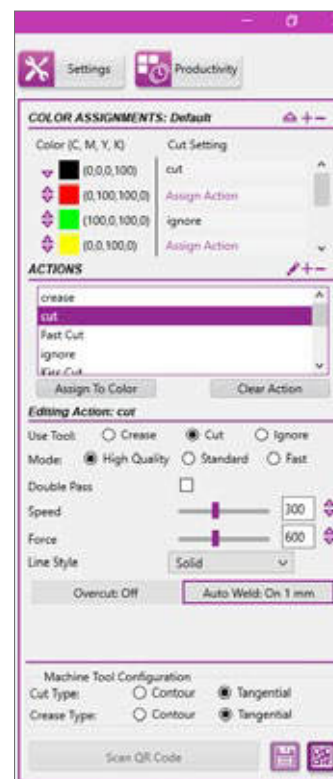
The QR workflow has massive benefits in that it will access the correct cut file for each job placed on the cutting table, this means you can have each job uniquely different from the next, enabling the processing of mixed jobs in one pass.

Assign processes by colour!



TOUCH SCREEN - CONTROL SURFACE

Large interactive and immersive 7" touch screen for easy operation and access to powerful functions and settings.



OPTIONAL EQUIPMENT

ColorCut Pro Server Station - seriously enhance your productivity!

Supplied complete with a pre-installed Windows® PC and ColorCut Pro software suite, with a flat screen monitor, mouse and keyboard. Also includes software licence for two additional user seats.



QR code scanning for instant job cut file retrieval

The **Server Station** is supplied with a pre-installed Windows® PC and ColorCut Pro software suite, with a flat screen monitor, mouse and keyboard

Production Studio is the core operating software

Template Maker enables designers to create simple cartons and shaped items

Job Library Manager sophisticated job management, with custom action assignment

User Licence allows 2 extra user seats



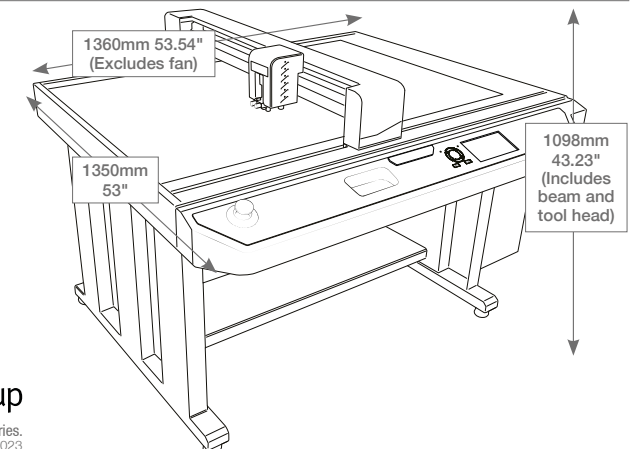


Technical Specifications



POSITION	
Format/Size	B1 (4 x SRA3) / US ARCH E1 (4 x Tabloid Extra)
Market	Prototype and light production, on-demand packaging and sheet card and corrugated card (types E/F/N) cutting system – also suitable for sheet labels
CUT AREA	
Maximum media area	800mm x 1100mm
Effective contour cutting area	680mm x 1020mm
Stand	Included
Media hold-down method	1100W Vacuum suction
Acoustic muffler / silencer	Included
CUTTING CONTROL	
Cutting carriage	QUAD Tool (4 tool) configuration (2 passive (contour/drag) and 2 active (Tangential) tool positions) Note: this is a 2 + 2 system, so 2 tools are active at one time
Cutting force	CREASE: Tool position 1; Position 1A: Active Tangential Crease Wheel, Position 1B: Passive Ball Crease Both Tool 1 positions, up to 2,500gf (2.5kg). (only 1 active at a time) CUT: Tool position 2; Position 2A: Active Tangential Cut Knife, Position 1B: Passive (Drag) Contour Knife Both Tool 2 positions, up to 2,500gf (2.5kg). (only 1 active at a time)
Max cutting depth	Passive Tool: Paper/card up to 800micron. Maximum depth: 1000micron (low density substrate i.e., rice paper / softboard). Active Tangential Blade: Fluted / corrugated board up to 3mm
Max speed	High Definition: 750mm/s Standard Mode: 960mm/s Fast Mode: 1,200mm/s
Programmable resolution	HPGL 0.025mm
Typical cut accuracy	+/- 125
Mountable tools	5 tools supplied as standard: Tangential blade holder, tangential creasing tool with two interchangeable wheels, standard blade holder for drag knife, x 2 standard ball creasing tools & pen calibration tool
Available tools	
Blades (tangential):	5mm : 45° insert blades - for heavier/thicker stocks up to 3,000
Blades (contour/drag):	1mm : Yellow - 30° cemented carbide blade - for thin film and very soft material 1mm : Red - 45° cemented carbide blade - for adhesive stickers, thin card under 0.25mm 1mm : Blue - 60° cemented carbide blade - for hard media. The sharply angled tip provides a sharper point edge. Suitable for penetrating harder media types (restricted by maximum limit of flatbed) 1.4mm : Red - 45° circlip cemented carbide blade - for most packing board up to 750 micron. Circlip provides better pressure and improves blade direction changes on dense media, from 0.25 to 0.75mm thick 1.4mm : Blue - 60° circlip cemented carbide blade - for dense, rigid or thick media. Sharply angled tip provides a sharp point ideal for polyester, PVC or magnetic materials. 0.25 - 1.2mm

SOFTWARE & CONNECTIVITY	
File formats	ColorCut Pro (only). ColorCut Pro cut files are created using the ColorCut plugin (below).
ColorCut Pro 5 (Plug-in)	ColorCut Pro 5 Client (supplied) is a plugin for Adobe® Illustrator® (Mac or PC) & CorelDRAW® (PC only) (requires either app). Automatically adds cut registration targets (SmartMARKs), QR Codes and Job numbers to the cut files. Then creates the cut files and sends cut files to the ColorCut Pro Job Library. ColorCut Pro - Production Studio (supplied) (PC ONLY) is used to send cutting jobs to the cutter. ColorCut Pro - Production Studio can be installed on a standalone PC and will send cut files [†] from the ColorCut Pro Job Library (on same network LAN/WLAN as Graphic Design MAC's or PC's). <i>† The ColorCut Pro Job Library is a repository of cut files already created using ColorCut Pro Client MAC or PC (detailed previously).</i> Alternatively, ColorCut Pro Production Studio can also be installed on a Graphic Designers PC to send cut files directly from a graphics application to the cutter.
ColorCut Pro 5 (Production Studio)	
Job identifier	QR Code &/or Job Number
ColorCut Pro 5 - (Plugin) compatibility	PC: Direct Plugin to: Adobe® Illustrator® CS6 / CC 2014 up to 2023, CorelDRAW® X8, 2017 - 2023 Graphics Suite. Mac: Adobe® Illustrator® CC 2022 up to 2023
ColorCut Pro - Production Studio	Windows 10/11 Pro x64 bit. 8 GB of RAM, Quad Core Processor Recommended Resolution: 1280x960 or higher.
Minimum PC requirements	1 x USB, or Wired Ethernet.
REGISTRATION CONTROL	
Registration system	Advanced 8th generation ARMS (Automatic Registration Mark System), uses hi-res CCD camera system to read QR codes for instant job retrieval, also accurately reads registration marks, corrects linear, scale, skew and rotational/angular positional differences adapting the cut file as required.
POWER REQUIREMENTS	
Cutting Table - Power/Voltage (cutter)	200W, 3.0A , 110V 220V (Voltage specific)
Power (vacuum pump)	1100W, 110V / 16.5A (vacuum) 1100W, 240V / 9A (vacuum)
Approvals	Complies with CE and RoHS directive, VCCI Class A, EN55022 Class A
GENERAL	
Table weight (unpacked)	109kg
Table dimensions (unpacked)	L 1360 x W 1350 x H 1098mm
Fan dimensions	L 810 x W 375 x H 457mm
Weight (crated)	246kg include vacuum fan
Dimensions (crated)	L 1860 x W 1490 x H 620mm (include vacuum fan)



Genker Str. 10 · 53842 Troisdorf
Telefon +49 (0) 2241-23417-30
Telefax +49 (0) 2241-23417-55
mail@mehringgmbh.de
www.druckweiterverarbeitung.de

Plockmatic Group